



---

#### Highlights

- Provides visibility into the network, including applications used, websites accessed and actions being performed
- Enables granular control, including actions within particular web and non-web applications
- Helps protect against threats to web applications, including SQL injection and cross-site scripting attacks
- Provides IBM Ahead of the Threat® protection backed by IBM X-Force® research
- Helps protect systems prior to being patched with IBM Virtual Patch® technology
- IBM Security Network Protection for VMware helps protect private virtualized networks

## IBM Security Network Protection

### *Integrated security, visibility, and control for next-generation network protection*

IBM Security Network Protection is designed to protect your business-critical network infrastructure through a unique combination of threat protection, visibility and control. IBM extends the abilities of traditional intrusion prevention systems by offering a next-generation solution that provides network security professionals with tools to help protect their network, and provide visibility and control over it. IBM Security Network Protection helps reduce cost and complexity by consolidating point solutions into a single, extensible network security platform. And by controlling and eliminating non-critical, high-bandwidth activity, organizations may achieve additional cost savings within the infrastructure.

While organizations do require increasingly sophisticated security measures to address today's security threats, reducing management complexity and containing administration costs are also top priorities. IBM Security Network Protection is an integrated solution that can help you accomplish all of these tasks. By combining several advanced capabilities, this solution can help identify and protect against threats, provide critical insight into network activities and enable granular application control.



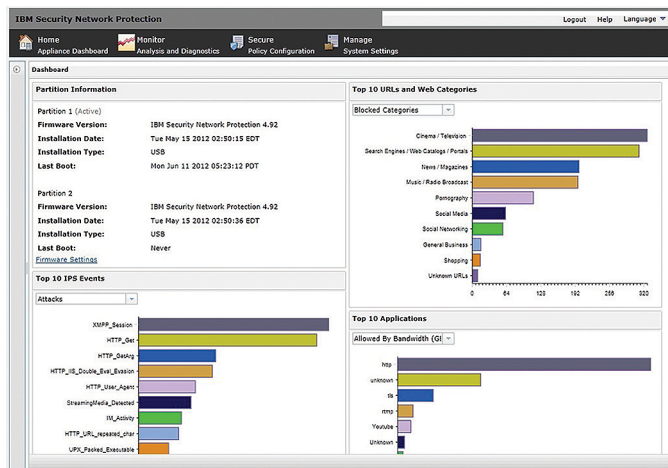
## Protection against evolving threats

Security threats today are continually evolving. With the rapid growth of cutting-edge web applications and increased file-sharing, activities that may have been considered harmless in the past could become potential openings for attackers. Traditional security means, such as anti-malware software and firewalls, have become easier to bypass. The need for more advanced, proactive threat protection is critical in order to help ensure productivity, data security and compliance. This means providing comprehensive protection against new and emerging web application threats, the ability to detect embedded shellcode threats and other advanced features.

The IBM Protocol Analysis Module (PAM) is designed and updated by the X-Force research and development team and is a key element within the IBM Security Network Protection appliance. The X-Force team tracks Internet threat levels from its Global Threat Operations Center to create one of the world's most comprehensive threat databases. PAM then incorporates these continuous content-and-security updates to help security professionals stay ahead of emerging threats. The combination of PAM and the X-Force database helps to protect against zero-day exploits and enables users to identify a wide range of security risks such as malware, botnets, peer-to-peer activity and many others.

## Critical insight and visibility

By combining several key security capabilities, IBM Security Network Protection is able to go beyond basic threat protection and provide IT professionals with critical insight and visibility into their enterprise network activity, such as which applications are being used, which websites are being visited and who is visiting them. To help improve security, organizations need to know exactly what is going on within their networks including which applications are being used and types of web sites being accessed from the corporate network. These activities can create opportunities for attacks, which can cause data loss, violate corporate policies or introduce compliance issues. IBM Security Network Protection can also provide visibility into bandwidth usage to help identify non-business-critical activities that consume high amounts of bandwidth and resources.



The IBM Security Network Protection dashboard provides an immediate view into the nature of traffic on the network including Web and application use by users and groups.

## Granular control over network activity

Building upon high levels of threat-protection and network visibility, IBM Security Network Protection includes granular control functionality, which enables users to act on newly acquired insight into the network. Designed to reduce potential attack vectors and exposure to threats, this granular control functionality provides insight into common attack delivery methods such as social media sites to help identify and protect against emerging attacks such as spear phishing and other advanced threats targeting users.

Having the ability to create granular control policies allows organizations to reduce overall risk, as well as the bandwidth costs related to non-business use of the network. To provide maximum application coverage, IBM Security Network Protection includes support for more than 2,000 applications and individual actions, and leverages a database of more than 25 billion URLs. To help improve accuracy, IBM web-crawling technology continually categorizes and re-categorizes URLs as they change. These updates are incorporated into the IBM Security Network Protection appliances to maximize the effectiveness of use policies and provide users the tools they need to help protect against the latest Internet threats.

## Virtual networks

In addition to protecting physical networks, organizations also need to protect their private virtualized networks from advanced persistent threats and malware. IBM Security Network Protection for VMware provides comprehensive protection, visibility and control to help secure private cloud virtualized environments. IBM Security Network Protection for VMware is a virtual appliance solution that provides the same protection against attacks that the IBM Security Network Protection physical appliance provides in legacy networks.

IBM Security Network Protection for VMware provides visibility into the VMware vSphere network, including applications used, websites accessed and actions performed. IBM Security Network Protection for VMware protects against vulnerabilities in virtual network traffic, staying ahead of the threat with preemptive protection, rather than waiting until a threat is present and blocking the exploit.

## Seamless deployment and integration

IBM Security Network Protection can be seamlessly deployed into a wide variety of environments. This family of products includes flexible features such as interchangeable network interface modules (NIMs) to support a wide variety of networking standards and configurations as they change over time. It also provides flexible performance licensing to allow performance upgrades without hardware changes utilizing a simple license upgrade. A pre-configured X-Force default security policy is available out-of-the-box, and appliances can be quickly deployed and centrally managed across a large number of sites using IBM Security SiteProtector™ System.

As part of the IBM Threat Protection System, IBM Security Network Protection integrates tightly with the IBM QRadar Security Intelligence Platform. This includes the ability for IBM Security Network Protection appliances to send flow data in the standard Internet Protocol Flow Information Export (IPFIX) data format to provide a constant data feed for more sophisticated analysis and correlation. IBM Security Network Protection appliances can also receive quarantine commands with the ability to block traffic in the event that a security risk is detected by QRadar SIEM. This

provides QRadar users with the ability to take immediate action when a security threat is detected.

## Why IBM?

Taking a smarter approach to network security, IBM Security Network Protection provides next-generation intrusion prevention system capabilities for advanced protection against evolving security threats. As part of the IBM Threat Protection System, it is a key component in preventing attacks at their onset. It provides tools for administrators to create a security-rich environment, while having more visibility and control over their networks, resulting in improved bandwidth efficiency and reduced costs. Leveraging the IBM X-Force threat database and a vast URL database, the solution provides up-to-date data about emerging threats. By integrating several key security features into a single offering, IBM Security Network Protection provides a comprehensive, cost-efficient answer to the challenges faced by organizations today.

## IBM Security Network Protection appliances at a glance

	XGS 3100	XGS 4100	XGS 5100	XGS 7100
<b>Performance Characteristics*</b>				
Inspected throughput	Up to 800 Mbps	Up to 1.5 Gbps	Up to 7 Gbps	Up to 25 Gbps
Flexible performance levels (FPL)	Up to 400 Mbps (FPL 1) Up to 800 Mbps (FPL 2)	Up to 750 Mbps (FPL 1) Up to 1.5 Gbps (FPL 2)	Up to 2.5 Gbps (FPL 1) Up to 4 Gbps (FPL 2) Up to 5.5 Gbps (FPL 3) Up to 7 Gbps (FPL 4)	Up to 5 Gbps (FPL 1) Up to 10 Gbps (FPL 2) Up to 15 Gbps (FPL 3) Up to 20 Gbps (FPL 4) Up to 25 Gbps (FPL 5)
Inspected SSL throughput (inbound)	Up to 500 Mbps	Up to 900 Mbps	Up to 4.5 Gbps	Up to 12 Gbps
Inspected SSL throughput (outbound)	Up to 400 Mbps	Up to 700 Mbps	Up to 2.5 Gbps	Up to 7.5 Gbps
Maximum throughput (UDP)	3.5 Gbps	10 Gbps	15 Gbps	45 Gbps
Average latency	<150 µs	<75 µs	<75 µs	<75 µs
Connections per second (HTTP)	10,000	15,000	75,000	225,000
Concurrent sessions (HTTP)	500,000	1,000,000	2,200,000	15,000,000
<b>Physical Characteristics</b>				
Form factor	1U	1U	1U	2U
Height	44.2 mm/1.75 in.	44.2 mm/1.75 in.	44.2 mm/1.75 in.	88.4mm/3.5 in.
Width (rack)	430 mm/16.9 in.	430 mm/16.9 in.	430 mm/16.9 in.	430 mm/16.9 in.
Depth (rack)	540 mm/21.26 in.	540 mm/21.26 in.	540 mm/21.26 in.	570 mm/22.44 in.
Weight	8.62 kg/19 lb	9.36 kg/20.6 lb	11.58 kg/25.4 lb	18.0 kg/29.7 lb
Rack mounting rails	Sliding with square hold post support			
Management interfaces	2 x 1GbE, RJ-45 (IPv6 supported)			
Fixed monitoring interfaces	4 x 1GbE, RJ-45 (integrated bypass)			N/A
Maximum monitoring interfaces (1GbE)	4	Up to 12	Up to 20	Up to 32
Maximum monitoring interfaces (10GbE)	N/A	Up to 2	Up to 4	Up to 8
Supported physical media types	100/1000 RJ-45	100/1000 RJ-45 copper, 1G fiber (SX/LX), 10G fiber (SR/LR), 1G SFP, 10G SFP+	100/1000 RJ-45 copper, 1G fiber (SX/LX), 10G fiber (SR/LR), 1G SFP, 10G SFP+	100/1000 RJ-45 copper, 1G fiber (SX/LX), 10G fiber (SR/LR), 1G SFP, 10G SFP+
Number of supported network interface modules (NIMs)	N/A	1	2	4
Network interface modules (NIMs) with integrated bypass	N/A	8 x 1GbE TX (100/1000) 4 x 1GbE SX 4 x 1GbE LX 2 x 10GbE SR 2 x 10GbE LR	8 x 1GbE TX (100/1000) 4 x 1GbE SX 4 x 1GbE LX 2 x 10GbE SR 2 x 10GbE LR	8 x 1GbE TX (100/1000) 4 x 1GbE SX 4 x 1GbE LX 2 x 10GbE SR 2 x 10GbE LR
Network interface modules (NIMs) with external bypass optional	N/A	4 x 1GbE SFP 2 x 10GbE SFP+	4 x 1GbE SFP 2 x 10GbE SFP+	4 x 1GbE SFP 2 x 10GbE SFP+
Redundant power supplies	Optional	Optional	Included	Included
Storage type	HDD	MLC-SSD	EMLC-SSD	EMLC-SSD
High-availability support	Support for active/active and active/passive environments			
<b>Electrical and environmental parameters</b>				
AC input rating	460 W (100-127 V @ 5.6A/200-240 V @ 2.8A)			
Average power consumption	62 W	81 W	194 W	360 W
Operating temperature/relative humidity	0°C – 40°C (32°F – 104°F) / 5% – 85% @ 40°C (104°F)			
Safety certification/declaration	UL 60950- 1, CAN/ CSA C22.2 no. 60950- 1, EN 60950- 1 (CE Mark), IEC 60950- 1, GB4943, GOST, UL- AR			
Electromagnetic compatibility certification/declaration	FCC Class A, Industry Canada Class A, AS/ NZS CISPR 22 Class A, EN 55022 Class A (CE Mark), EN 61000- 3- 2 (CE Mark), EN 61000- 3- 3 (CE Mark), EN 55024 (CE Mark), VCCI Class A, KCC Class A, GOST Class A, GB9254 Class A, GB17625.1			
Environmental declaration	Restriction of Hazardous Substances (RoHS)			

## For more information

To learn more about this offering contact your IBM representative or IBM Business Partner, or visit: [ibm.com](http://ibm.com)

\*Performance data quoted for IBM Security Network Protection is based on testing with mixed Throughput was determined by sending uncompressed mixed-protocol traffic through the appliance and measuring how much throughput was achieved with zero packet loss. For the benchmark testing, XGS series appliances were deployed with fully populated Network Interface Modules in default inline protection mode with "Trust X-Force" policy, in drop unanalyzed mode; Spirent Avalanche and Spirent TestCenter testing equipment running firmware v4.48 (or later); traffic mix: HTTP=69%, HTTPS=20%, SMTP=5%, FTP=5%, DNS=1%; where HTTP/HTTPS traffic is uncompressed using a 44 Kb object size with standard HTTP/S 1.1 GET requests; SMTP simple connections with no object transfer, FTP GET requests of 15,000 bytes in 2 ms bursts, and DNS standard A record lookup. SSL Inspection rates were measured by enabling SSL Decryption Policy. Maximum Throughput was generated using 1518 byte frame size UDP traffic.



---

© Copyright IBM Corporation 2015

IBM Corporation  
Software Group  
Route 100  
Somers, NY 10589

Produced in the United States of America

September 2015

IBM, the IBM logo, [ibm.com](http://ibm.com), are trademarks of International Business Machines Corp., registered in many jurisdictions worldwide. Other product and service names might be trademarks of IBM or other companies. A current list of IBM trademarks is available on the web at "Copyright and trademark information" at [ibm.com/legal/copytrade.shtml](http://ibm.com/legal/copytrade.shtml)

This document is current as of the initial date of publication and may be changed by IBM at any time. Not all offerings are available in every country in which IBM operates.

THE INFORMATION IN THIS DOCUMENT IS PROVIDED "AS IS" WITHOUT ANY WARRANTY, EXPRESS OR IMPLIED, INCLUDING WITHOUT ANY WARRANTIES OF MERCHANTABILITY, FITNESS FOR A PARTICULAR PURPOSE AND ANY WARRANTY OR CONDITION OF NON-INFRINGEMENT. IBM products are warranted according to the terms and conditions of the agreements under which they are provided.



Please Recycle

---